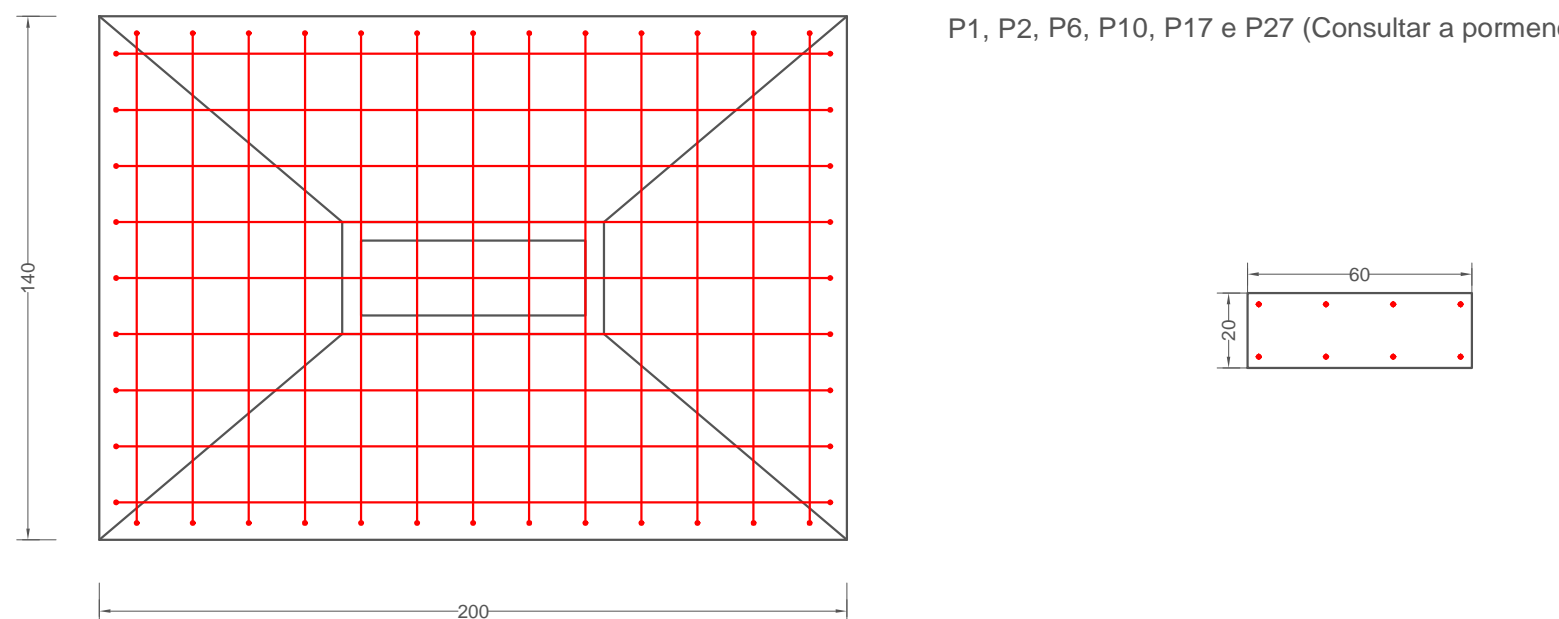
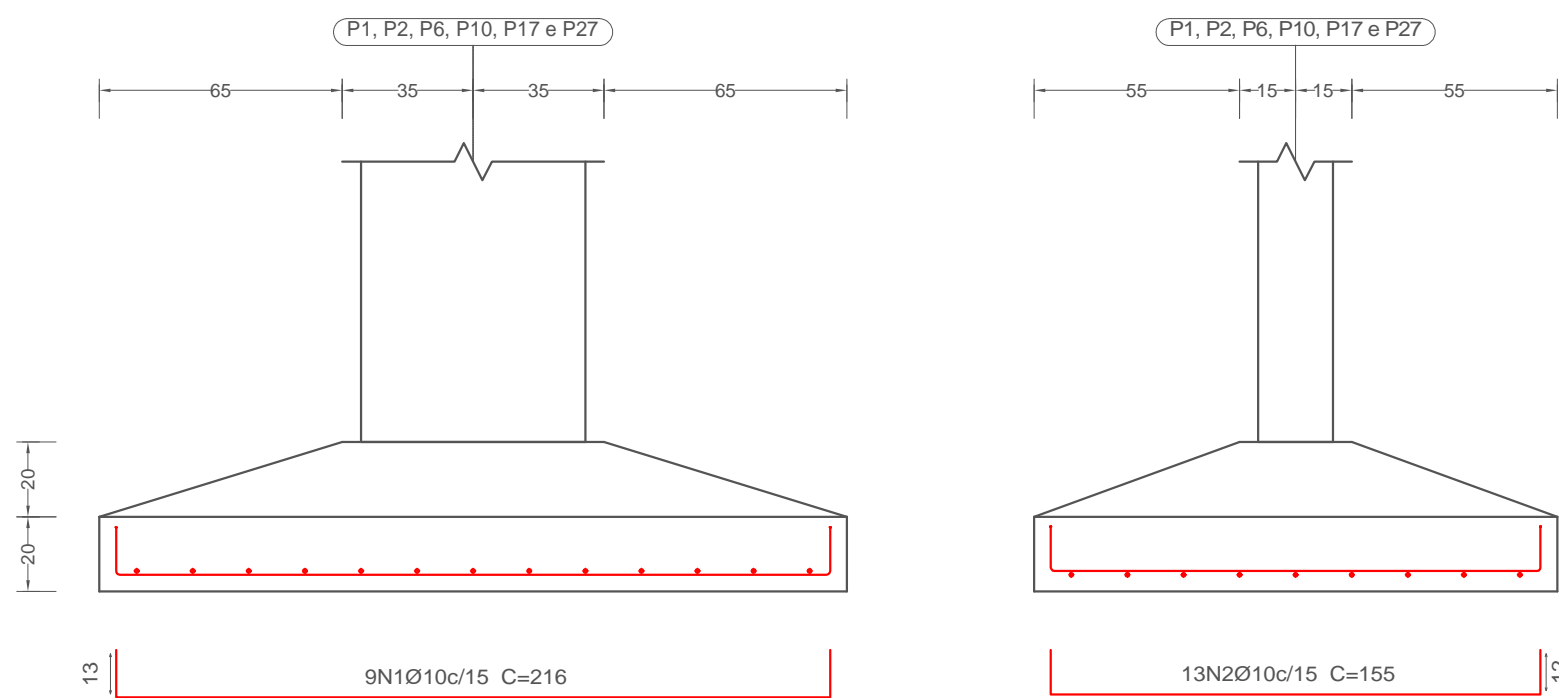


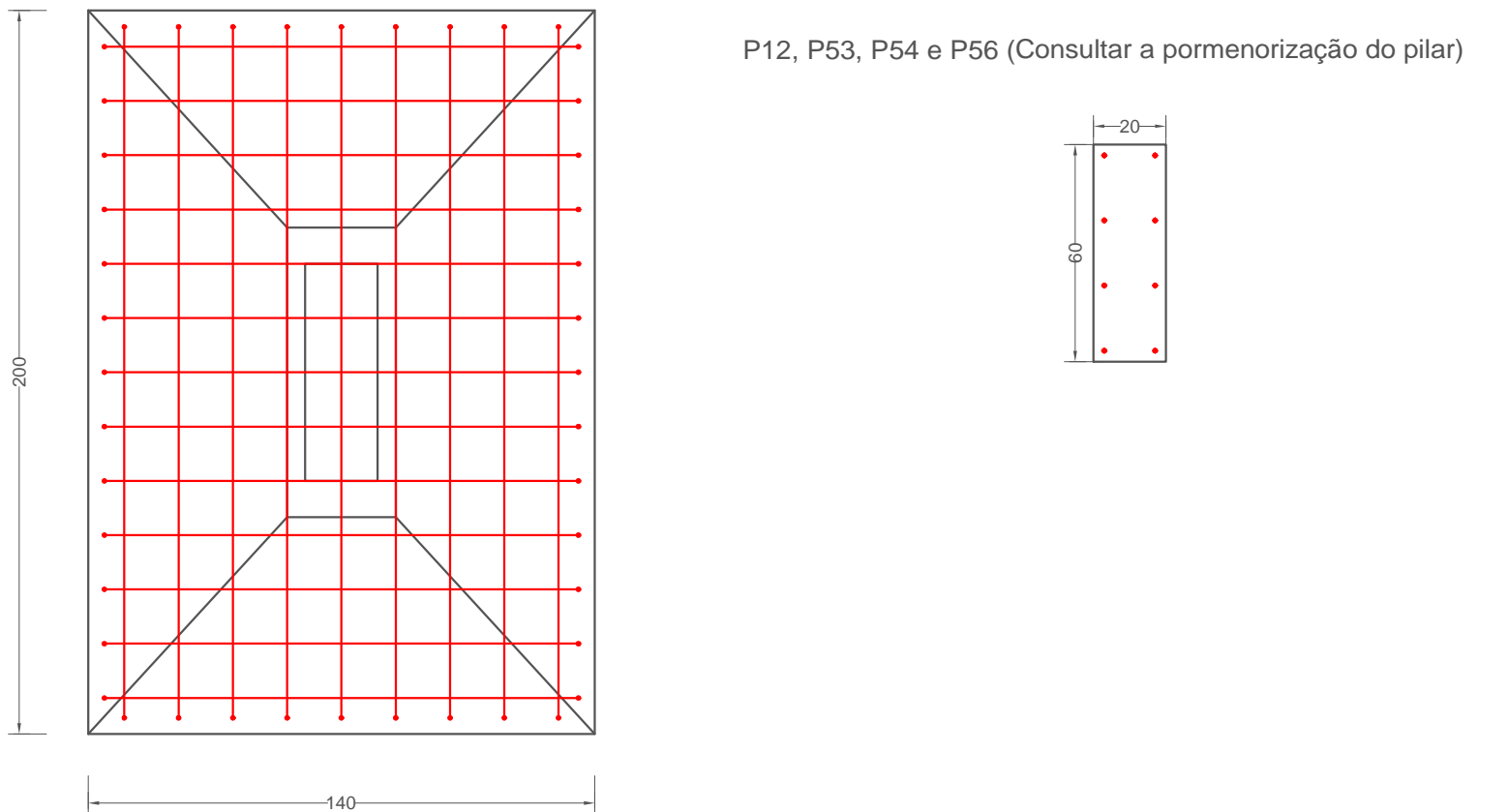
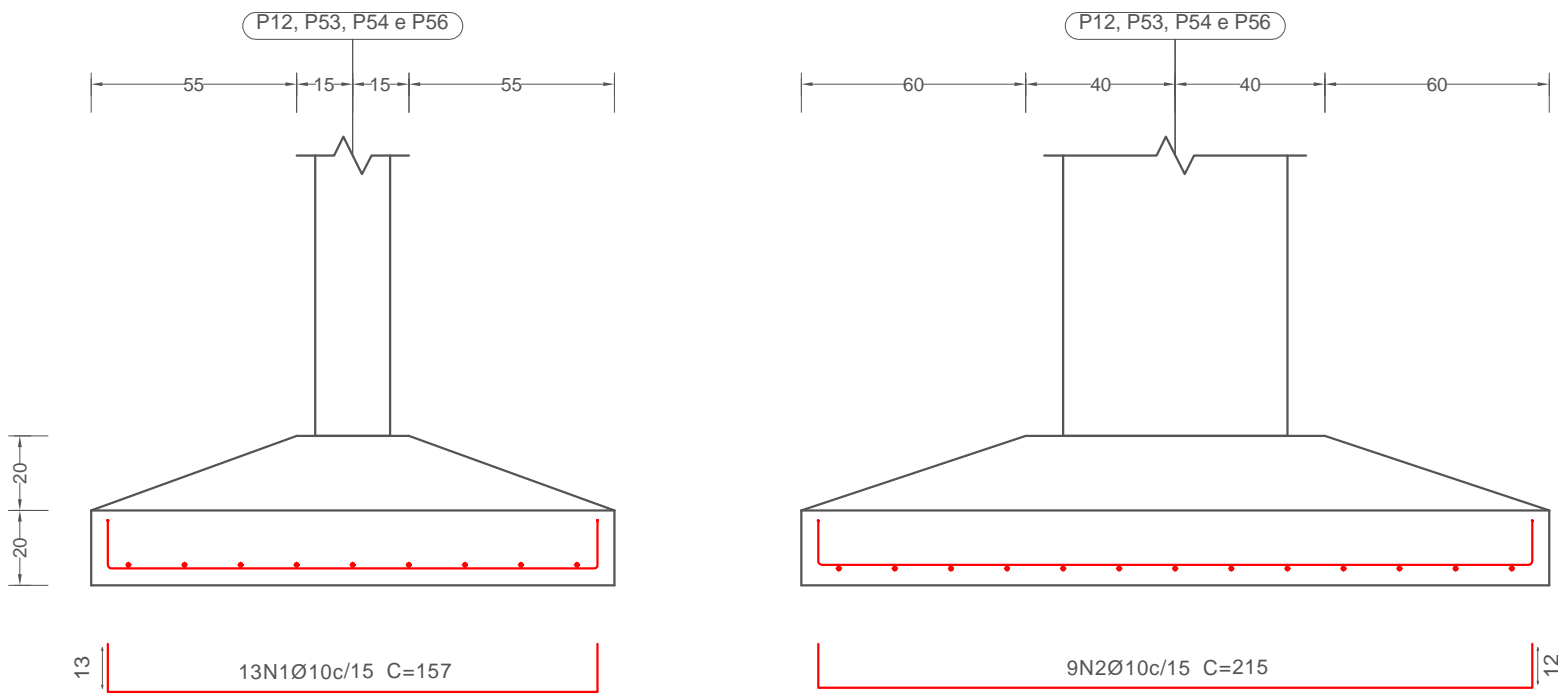
# FUNDAÇÃO

P1, P2, P6, P10, P17 e P27



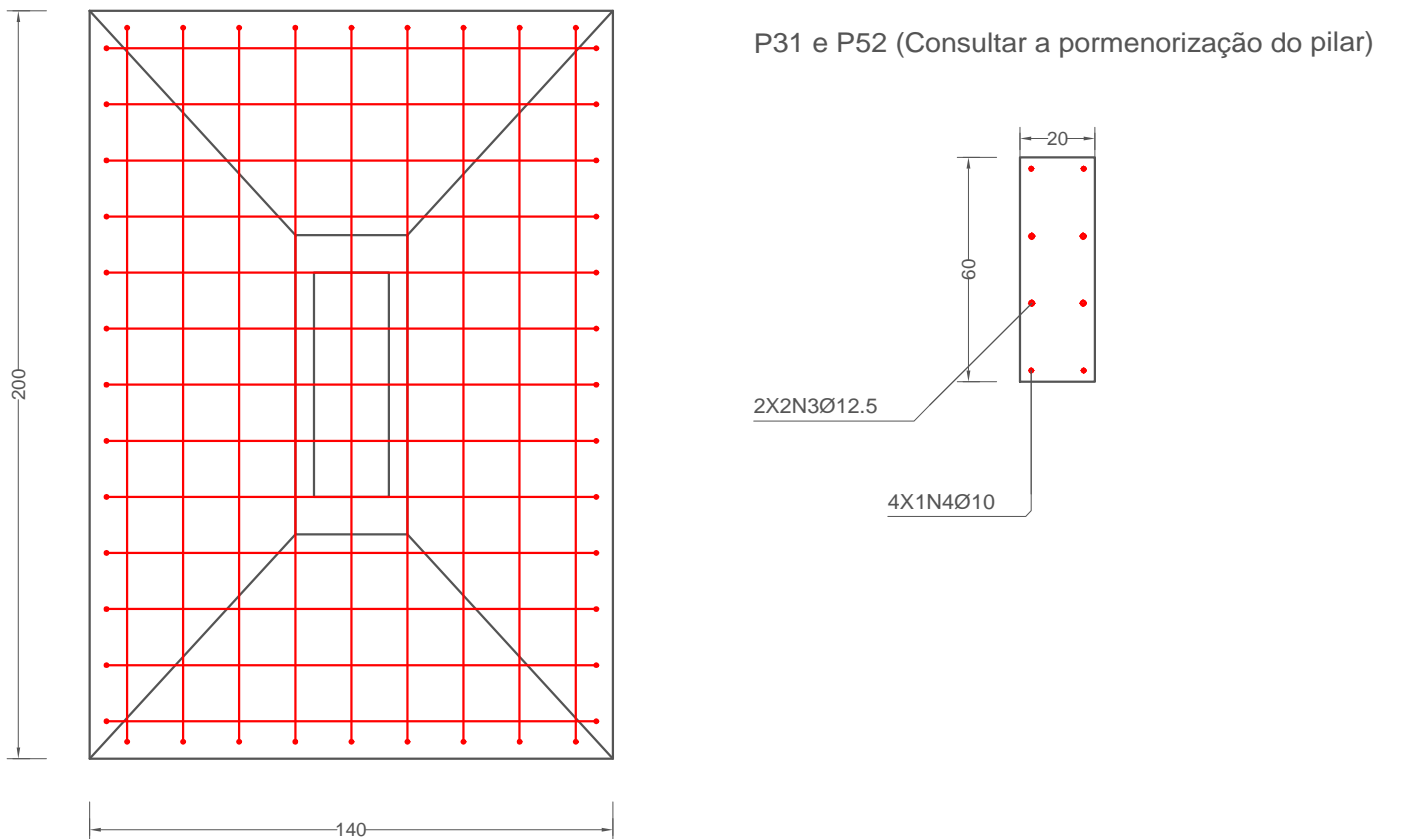
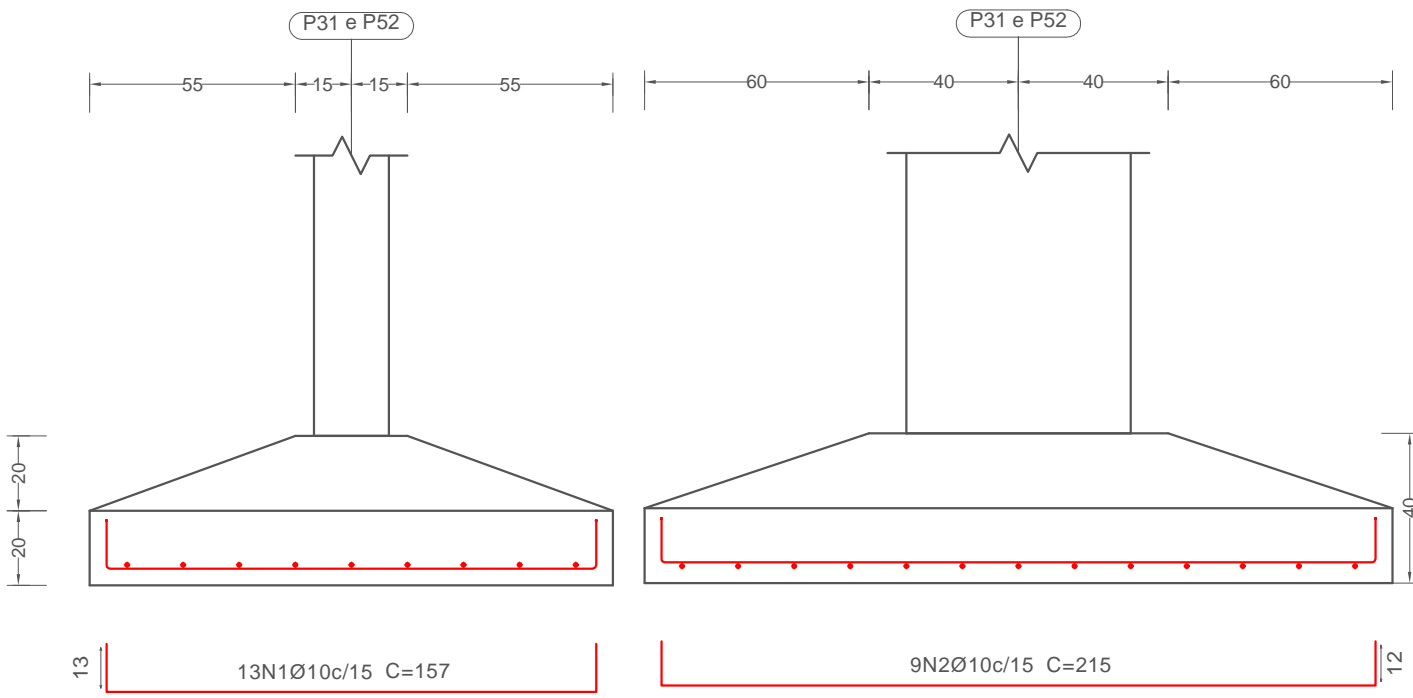
P1, P2, P6, P10, P17 e P27 (Consultar a pormenorização do pilar)

P12, P53, P54 e P56



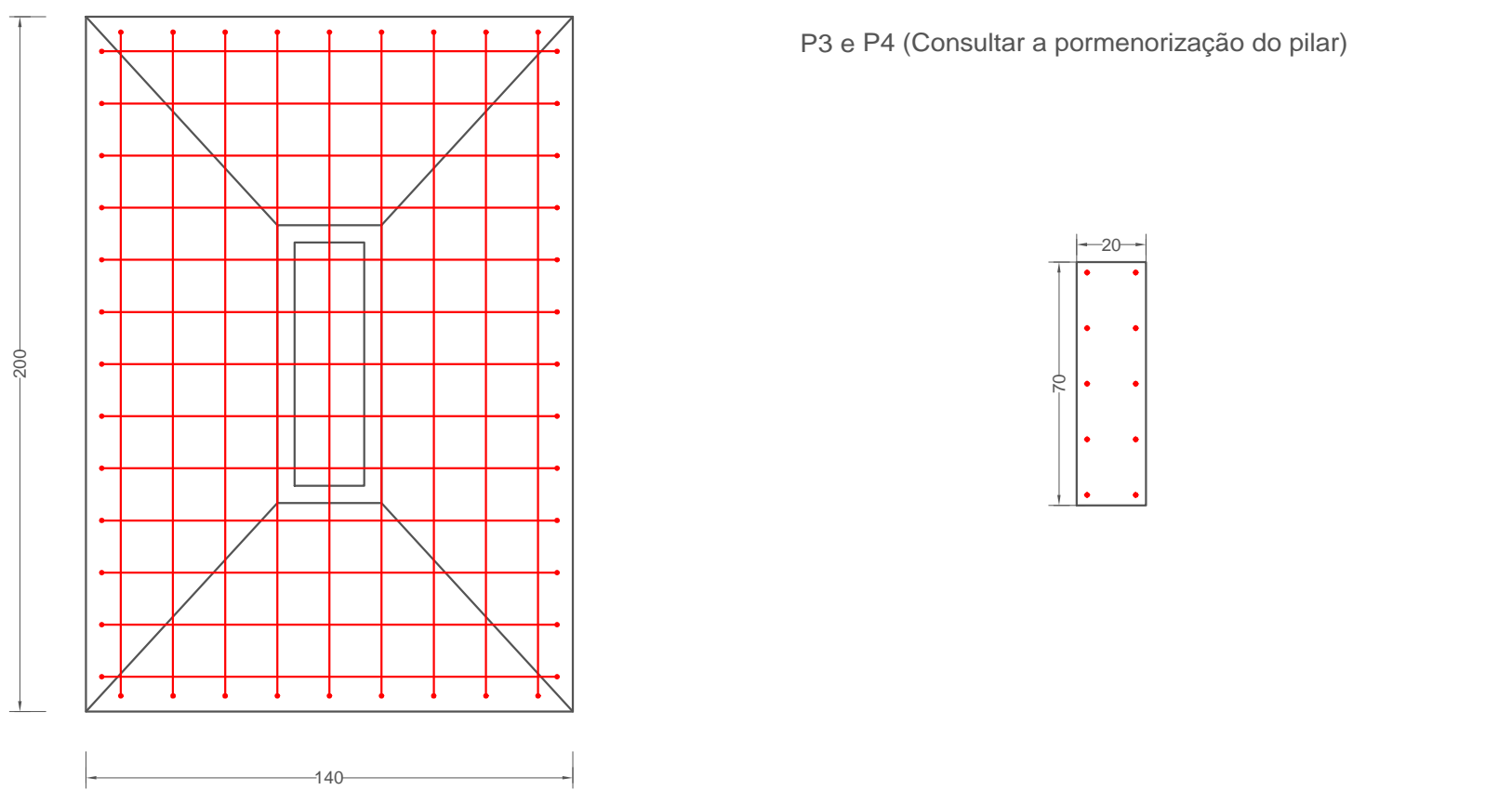
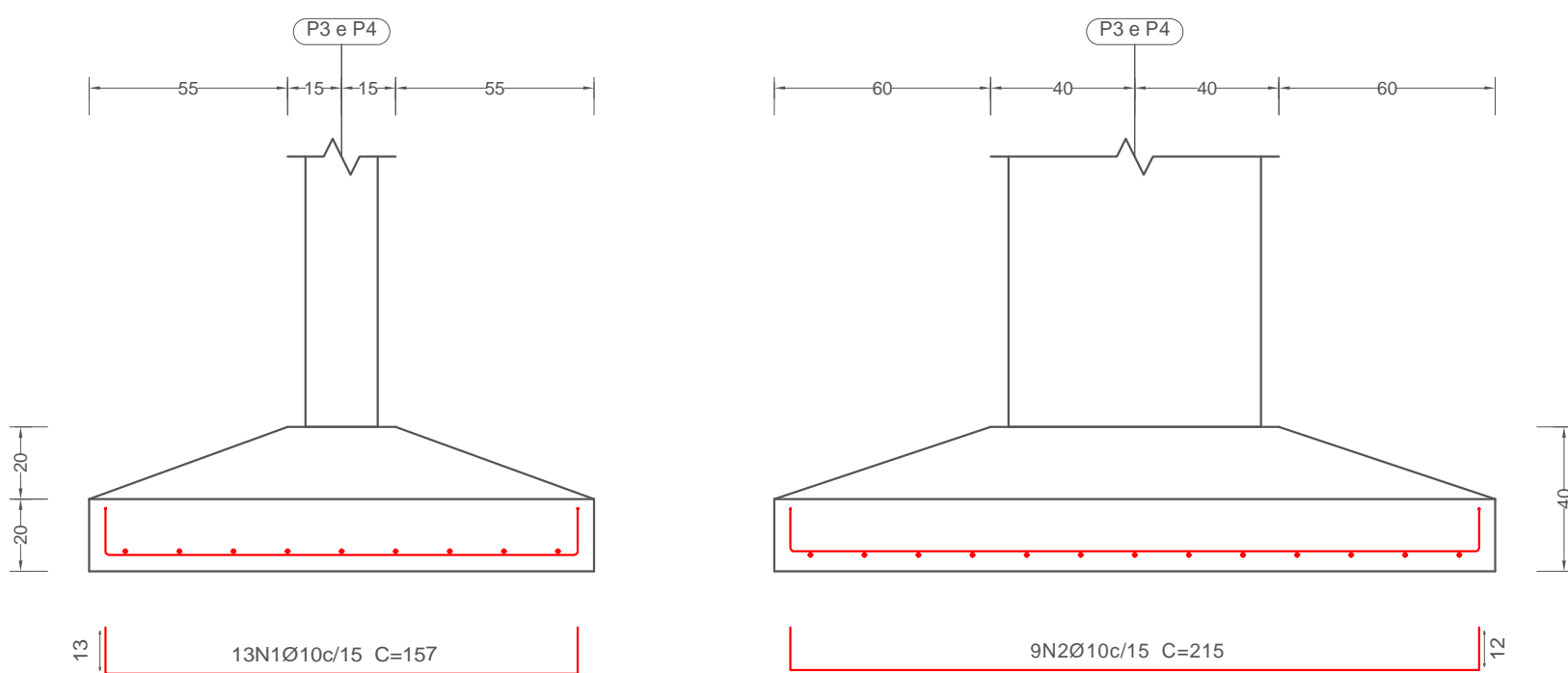
P12, P53, P54 e P56 (Consultar a pormenorização do pilar)

P31 e P52



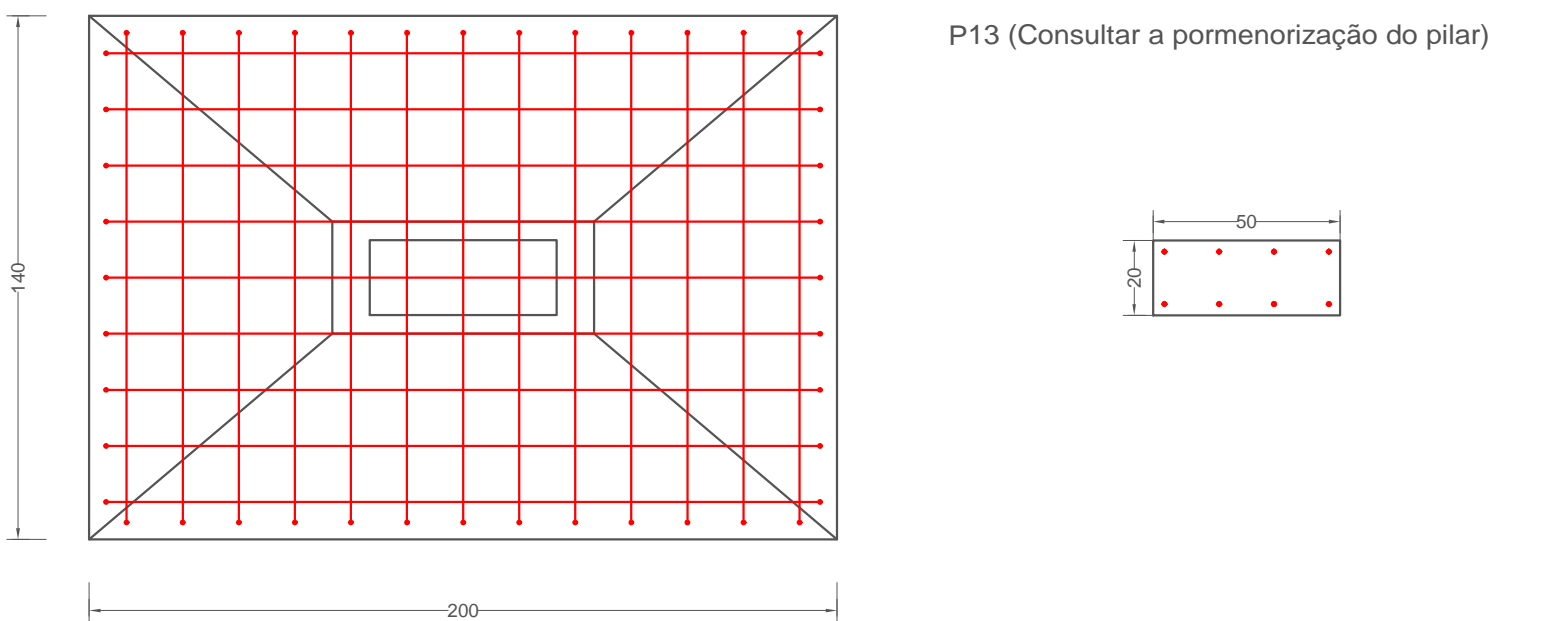
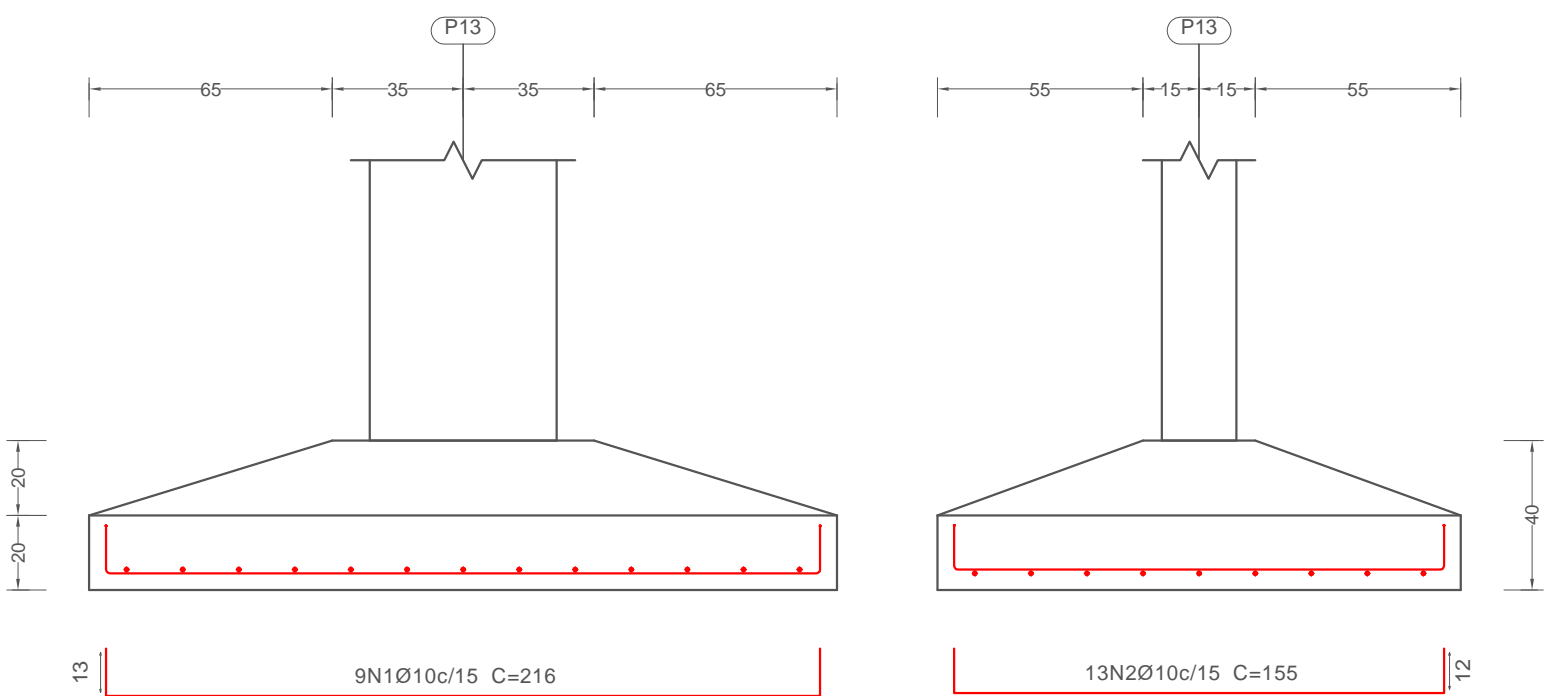
P31 e P52 (Consultar a pormenorização do pilar)

P3 e P4



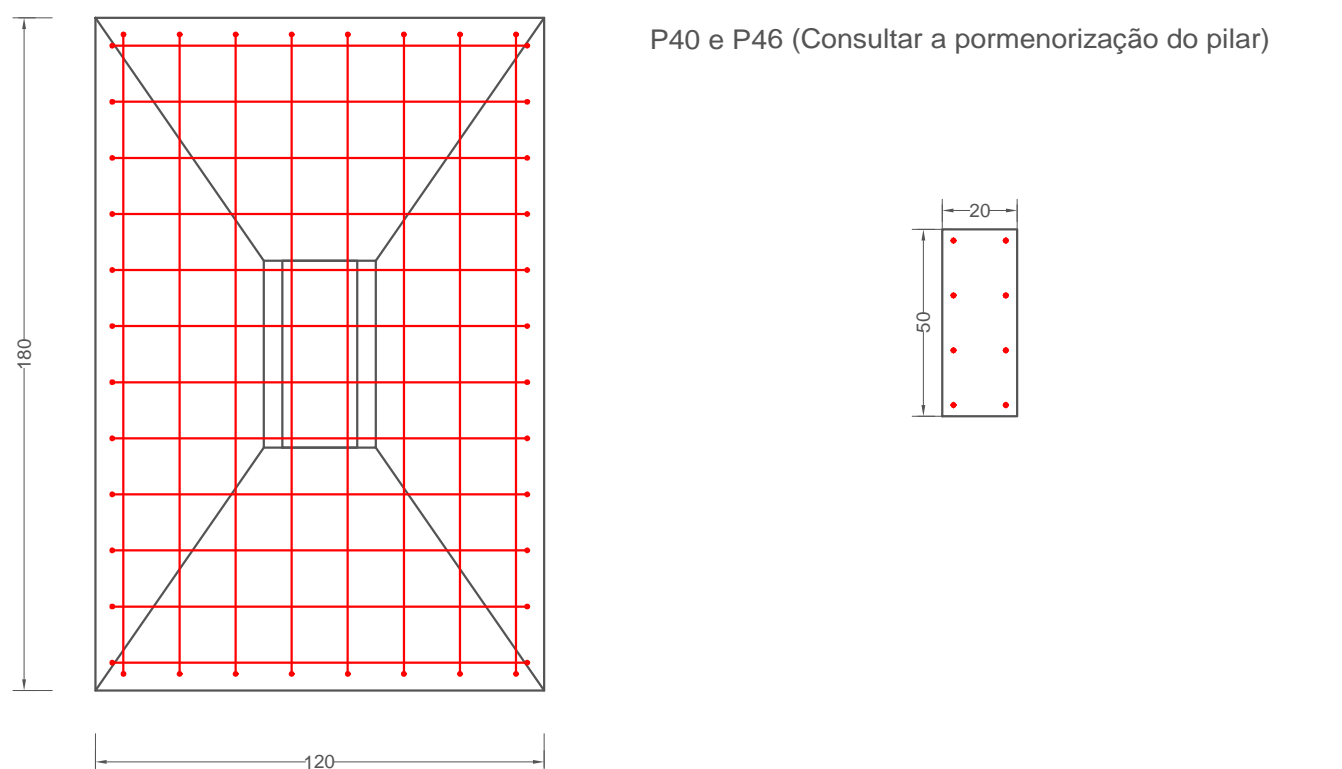
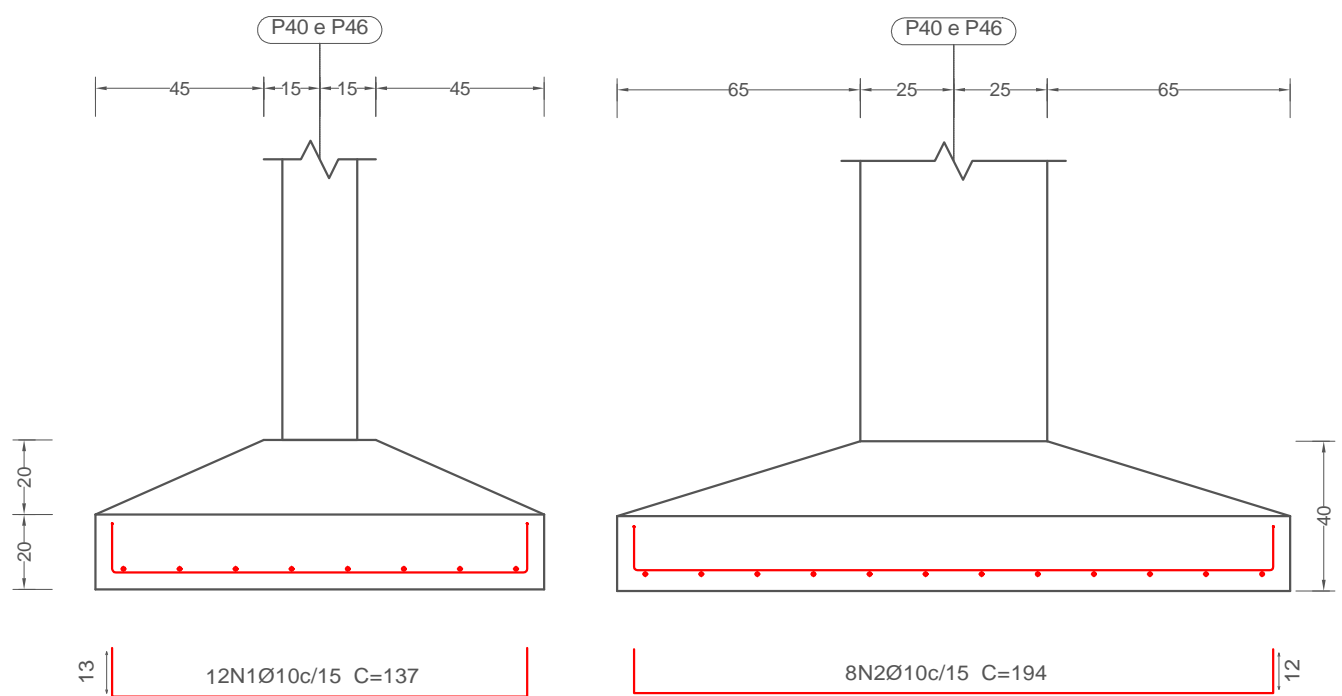
P3 e P4 (Consultar a pormenorização do pilar)

P13



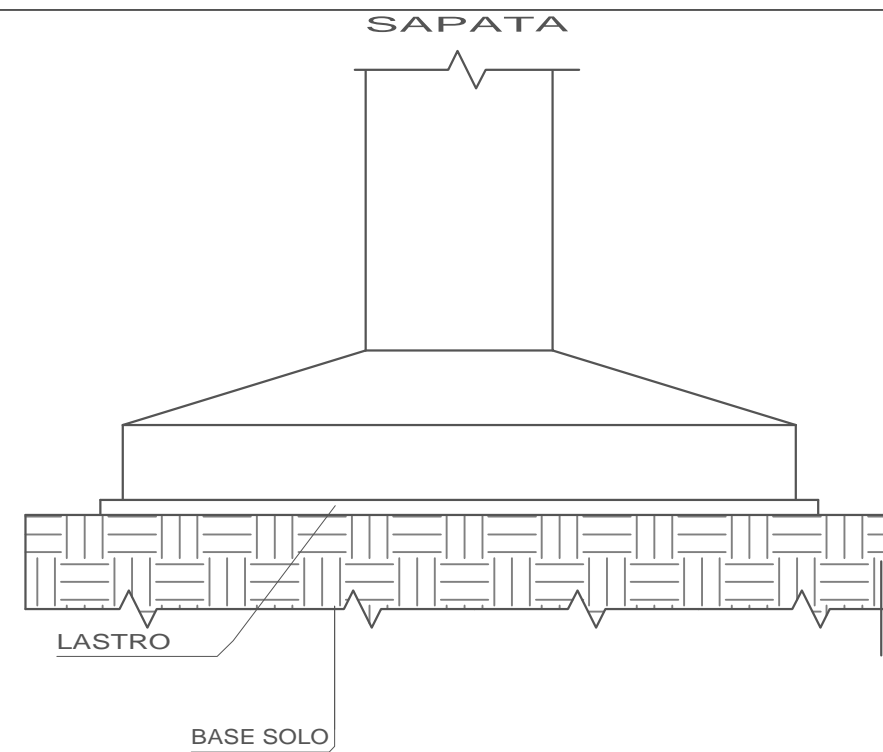
P13 (Consultar a pormenorização do pilar)

P40 e P46



P40 e P46 (Consultar a pormenorização do pilar)

## Det. Execução



### NOTAS

- 1 - A EXECUÇÃO DO ESCORAMENTO, DO RE-ESCORAMENTO E DO CIMBRAMENTO DEVE RESPEITAR A NBR 15696.
- 2 - RETIRAR ESCORAMENTO APÓS 28 DIAS DA CONCRETAGEM
- 3 - QUALQUER MODIFICAÇÃO OU DÚVIDA NO PROJETO DEVERÁ SER IMEDIATAMENTE INFORMADA AO PROJETISTA ESTRUTURAL

### COBRIMENTOS MÍNIMOS

LAJE E ESCADA: 2,5cm  
PILAR: 2,5cm  
PILAR (CONTATO COM O SOLO): 2,5cm

SAPATA: 4cm  
VIGA: 2,5cm

CONCRETO  
fck = 30 MPa

AÇO: CA-50 E CA-60



PREFEITURA MUNICIPAL  
SANTO ANTÔNIO DE LEVERGER

FUNDAÇÃO  
P1, P2, P6, P10, P17, P27, P12, P53, P54, P56, P31, P52,  
P3, P4, P13, P40, P46

RESP. TÉCNICO  
Maycon Henrique Moraes Rodrigues  
CREA - MT: 51648

PROPRIETÁRIO  
Prefeitura Municipal de Santo Antônio de Leverger  
CNPJ: 03.507.555/0001-12

PRANCHAS

02

02 - 31